

An Extract from Clement C. Moore's
Twas The Night Before Christmas

10 And then, in a twinkling, I heard on the roof
 18 the prancing and pawing of each little hoof.
 28 As I drew in my head, and was turning around,
 37 down the chimney St. Nicholas came with a bound.

49 He was dressed all in fur, from his head to his foot,
 59 and his clothes were all tarnished with ashes and soot;
 70 A bundle of toys he had flung on his back,
 80 and he looked like a peddler just opening his pack.

87 His eyes—how they twinkled! His dimples,
 89 how merry!
 96 His cheeks were like roses, his nose
 99 like a cherry!
 106 His droll little mouth was drawn up
 109 like a bow,
 117 And the beard of his chin was as
 121 white as the snow.



Quick Questions



1. How did St. Nicholas enter the house?



2. 'his clothes were all tarnished with ashes...'
 In this sentence, what does 'tarnished' mean?



3. Why do you think the author described his nose as
 'like a cherry'?



4. What do you think is going to happen in the next
 few verses of the poem?

Marvellous Mince Pies

- 11 1) Put the fluffy, white flour and soft, creamy butter
 13 into a large bowl.
- 18 2) Rub them together firmly using
 25 your fingers until they turn into crumbs.
- 35 3) Add the sweet sugar and the runny egg into the
 39 mixture and stir thoroughly.
- 49 4) Tip the mixture out onto a lightly floured surface and
 55 knead together until dough is formed.
- 65 5) Roll the pastry out until it is even and smooth.
- 73 6) Using something round, cut out circular bases and
 78 place them into muffin trays.
- 88 7) Scoop the mincemeat filling on top of each base, being
 93 careful not to overfill them.
- 104 8) Using egg to stick them together, place a pastry lid on
 114 top of the filling and gently squeeze the pies closed.
- 122 9) Bake in a pre-heated oven until golden brown.



Quick Questions



1. Which two ingredients do you mix together first?



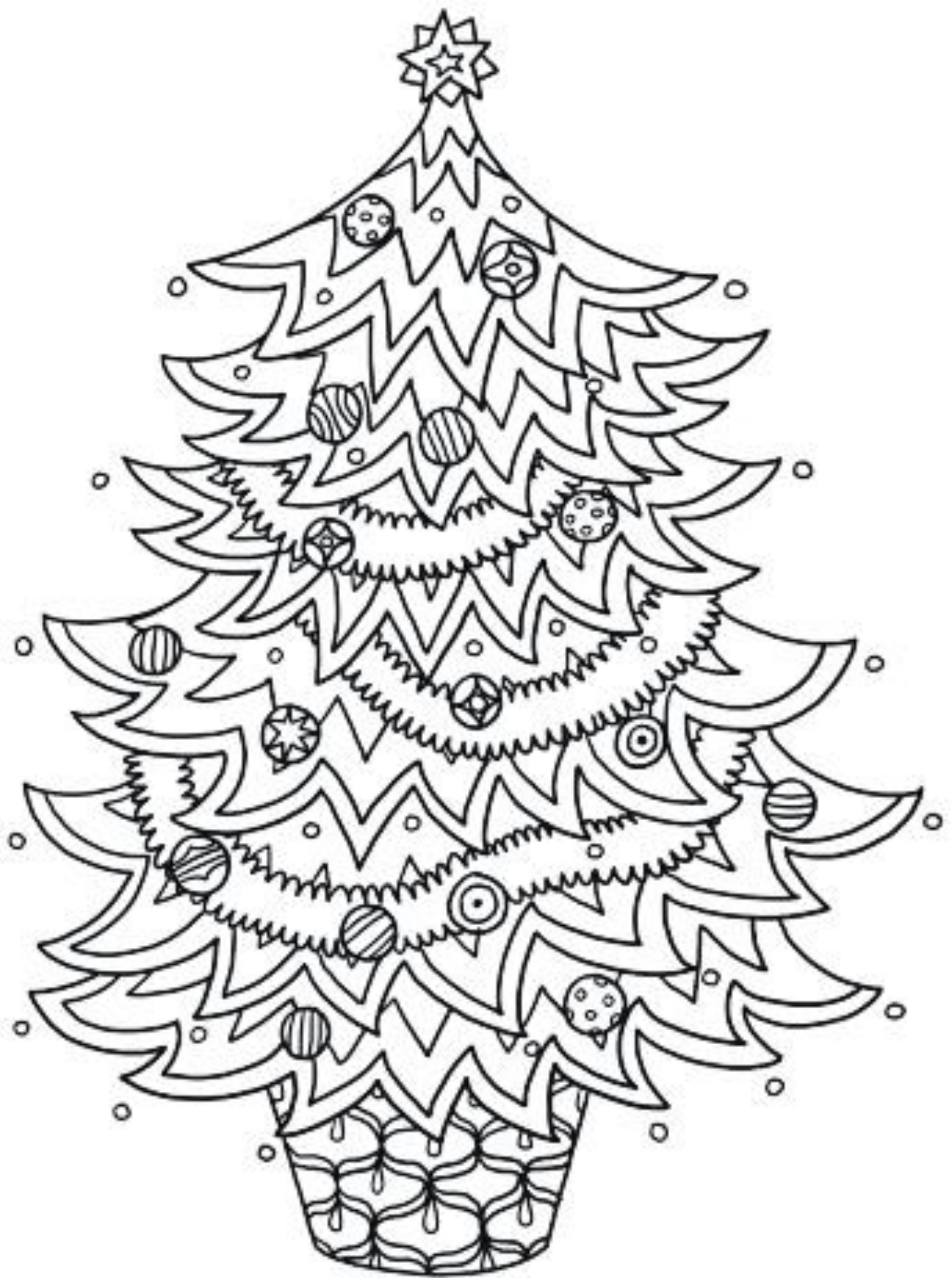
2. Find and copy three adverbs from the text.



3. Why should you be careful not to overfill the pies?



4. What could you use to cut the circular bases?



Multiplication 3×, 4× and 8× Tables

Solve the calculations to reveal the hidden picture. Each answer has a special colour.

0 - 10 = green

11 - 20 = black

21 - 30 = red

31 - 40 = brown

41 - 70 = blue

71 < = white

7×8	8×1	11×4	12×4	6×8	11×4	7×8	4×0	4×11
4×12	0×3	8×1	12×4	8×7	8×6	0×8	3×3	4×12
4×12	6×8	3×2	3×8	4×12	3×7	4×2	12×4	8×6
11×4	4×12	8×10	9×8	4×6	8×11	8×12	4×11	12×4
6×8	11×8	10×8	8×12	9×8	10×8	8×10	8×11	7×8
10×8	8×4	8×9	11×3	8×11	8×5	9×8	5×3	8×12
8×5	10×4	8×11	4×9	8×10	4×4	8×5	8×4	9×8
4×9	8×2	3×11	4×8	12×8	8×4	4×9	3×11	4×10
3×12	8×4	4×9	3×11	3×4	4×10	5×8	3×11	8×5
2×8	8×5	9×4	8×4	4×10	12×3	4×9	5×4	4×10

Challenge: Which of these calculations has the greatest answer?



It's a Cracker!

Work out the answers to the questions. Each number is linked to a letter. Use these letters to reveal the punch line of the Christmas jokes. Remember to read the clues across the page.

A	B	C	D	E	F	G	H	I	J	K	L	M
1	2	3	4	5	6	7	8	9	10	11	12	13
N	O	P	Q	R	S	T	U	V	W	X	Y	Z
14	15	16	17	18	19	20	21	22	23	24	25	26

1. What do you call Santa in the South Pole? _____

300 - 289 - 10 = ____

249 - 200 - 37 = ____

12 + 32 - 29 = ____

528 - 520 + 11 = ____

967 - 947 = ____

635 - 630 - 2 = ____

298 - 147 - 139 = ____

789 - 790 + 2 = ____

349 - 330 + 2 = ____

520 - 518 + 17 = ____

622 - 607 - 10 = ____

2. What kind of maths do Snowy Owls like? _____

4 + 4 + 4 + 3 = ____

290 - 285 + 18 = ____

189 - 185 + 8 = ____

458 - 453 + 2 = ____

382 - 377 = ____

20 - 13 - 6 + 1 = ____

238 - 232 + 12 = ____

1000 - 999 = ____

3. What do snowmen eat? _____

900 - 892 + 1 = ____

20 + 20 + 20 - 57 = ____

135 - 132 + 2 = ____

382 - 381 + 1 = ____

459 - 454 = ____

522 - 520 + 16 = ____

173 - 170 + 4 = ____

116 + 10 - 121 = ____

204 - 150 - 36 = ____

333 - 200 - 114 = ____

892 - 891 = ____

412 - 408 + 10 = ____

607 - 603 = ____

99 - 96 = ____

702 - 700 + 6 = ____

2 + 1 + 2 + 1 + 3 = ____

812 - 800 = ____

933 - 930 + 9 = ____

17 + 98 - 90 = ____

111 - 110 + 18 = ____

399 - 398 = ____

13 + 13 - 5 = ____

441 - 432 - 6 = ____

127 - 122 = ____

4. What sort of music do elves like? _____

178 - 155 = ____

20 + 20 + 20 - 42 = ____

389 - 388 = ____

2 + 2 + 2 + 5 + 5 = ____

567 - 554 = ____

99 - 30 - 30 - 18 = ____

870 - 851 = ____

67 - 60 + 2 = ____

18 - 3 - 3 - 3 - 6 = ____

5. What do elves drive? _____

230 - 217 = ____

88 - 79 = ____

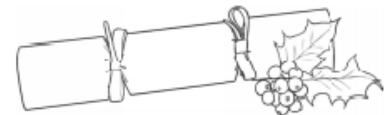
404 - 390 = ____

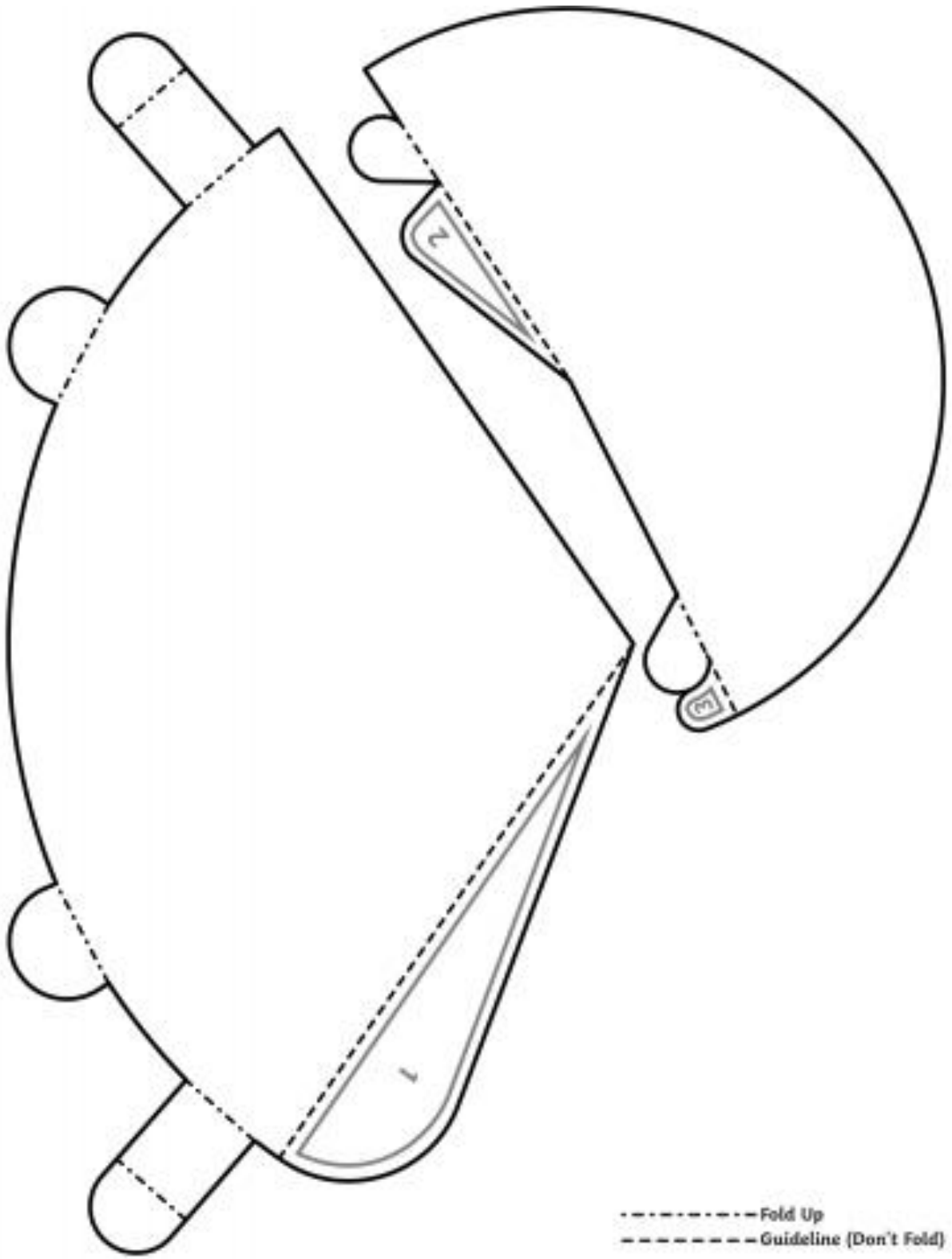
167 - 158 = ____

560 - 550 + 12 = ____

678 - 677 = ____

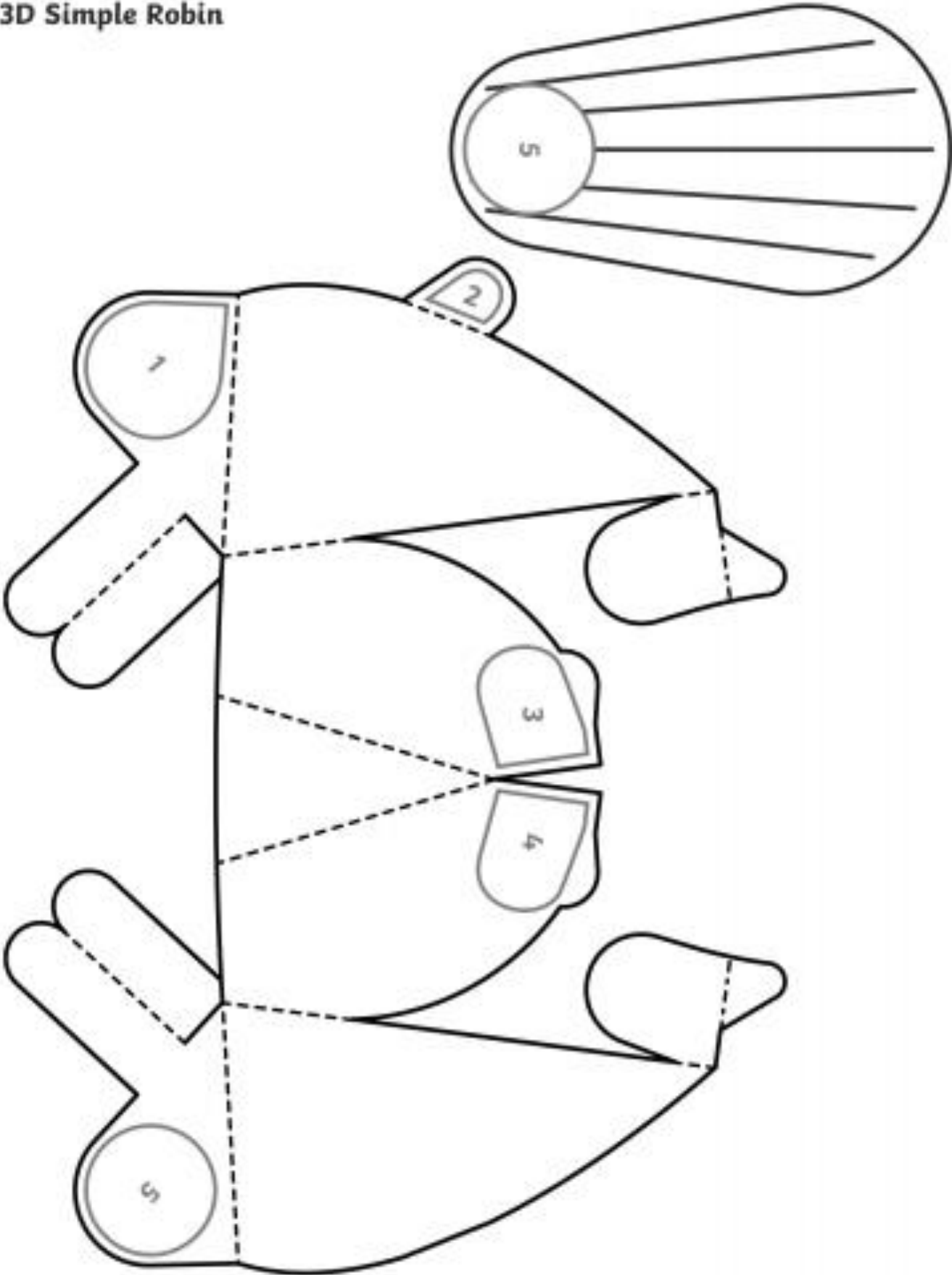
230 - 216 = ____





----- Fold Up
----- Guideline (Don't Fold)

3D Simple Robin



Plants in Jars

You will need:

Succulent plant

Glass jar

Ribbon or twine

Compost

Rocks

Shells

Trowel



These fabulous gifts are original and simple to make. They use succulent plants which store water in their leaves, and are ideal for Christmas as they remain green, need watering infrequently and thrive in a warm environment so are perfect for indoors.

Instructions

1. Mix equal amounts of sand and compost.
2. Place some rocks in the bottom of the jar.
3. Add a layer of shells.
4. Fill the rest of the jar with the sand and compost mixture. Press it down.
5. Make a hole in the middle and plant the succulent. Press the mixture around it.
6. Tie the ribbon around the top of the jar, making a festive bow.



*Please note, as this craft uses a glass jar, young children will need careful supervision.

Christmas

a f q m m y r r h z t e
h r s a n t a k i n g s
c a l r d j o s e p h c
f n b y o w l e e l a e
d k e t n a z a r e t h
m i t o c h u r c h r f
a n h c h r i s t m a s
n c l r g d o n k e y g
g e e p i c r h s f s o
e n h k f i h n p r t l
r s e j t u w u c o a d
x e m n s h e p h e r d

Christmas

Santa

Mary

Joseph

Bethlehem

Shepherd

Kings

frankincense

myrrh

gold

church

Nazareth

manger

donkey

star

gifts